

FOR LEASE > R&D / FLEX

28,757 Square Feet



1905 ASTON AVE SUITE 100 - CARLSBAD RESEARCH CENTER



Suite 100 Features

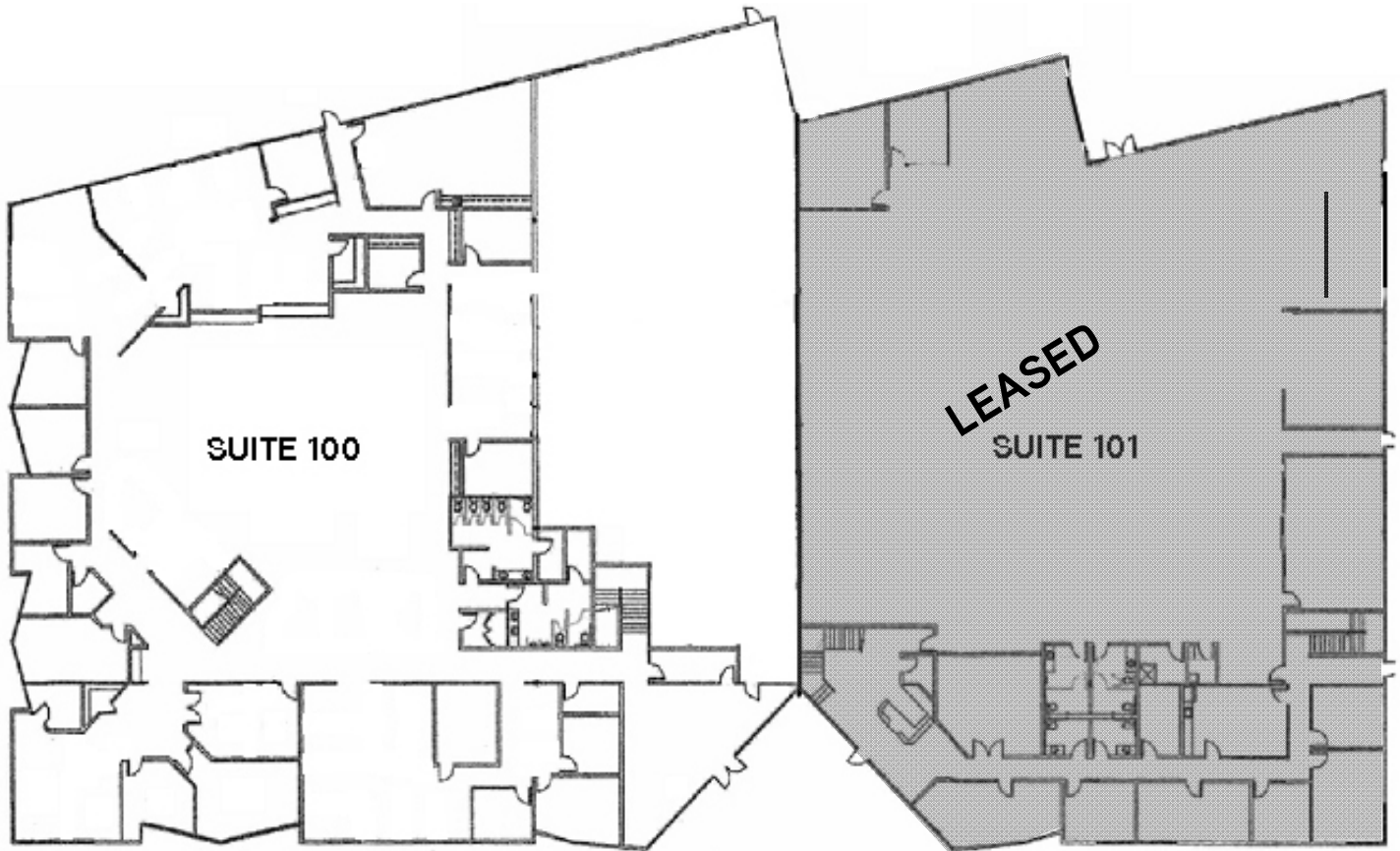
SQUARE FEET	28,757
TOTAL OFFICE	20,205
1ST FLOOR	14,350
2ND FLOOR	5,855
MFG/WAREHOUSE	8,552
POWER	1,200 Amps 120 - 208V
RESTROOMS	2 Sets & Shower
CLEAR HEIGHT	22'
TRUCK DOOR (GRADE)	1
PARKING 3.3/1000	95 Spaces
LEASE RATE - NNN	\$1.10/SF/ Month

(NNN ARE \$0.18/SF/ Month)

CHUCK MCNARY
760 930 7904
CARLSBAD, CA
chuck.mcnary@colliers.com
Lic# 00466251

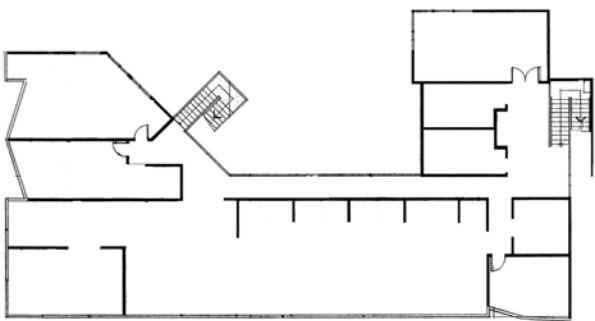
ERIK MCNARY
760 930 7924
CARLSBAD, CA
erik.mcnary@colliers.com
Lic# 01478947

COLLIERS INTERNATIONAL
5901 Priestly Drive, Suite 100
Carlsbad, CA 92008
www.colliers.com/carlsbad



SUITE 100 - Second Floor Office

SUITE 101 - Second Floor Office



This document has been prepared by Colliers International for advertising and general information only. Colliers International makes no guarantees, representations or warranties of any kind, expressed or implied, regarding the information including, but not limited to, warranties of content, accuracy and reliability. Any interested party should undertake their own inquiries as to the accuracy of the information. Colliers International excludes unequivocally all inferred or implied terms, conditions and warranties arising out of this document and excludes all liability for loss and damages arising there from. Colliers International is a worldwide affiliation of independently owned and operated companies.

CHUCK MCNARY
760 930 7904
CARLSBAD, CA
chuck.mcnary@colliers.com
Lic# 00466251

ERIK MCNARY
760 930 7924
CARLSBAD, CA
eric.mcnary@colliers.com
Lic# 01478947

