

FOR LEASE > INDUSTRIAL / WAREHOUSE SUITE

Poway Corporate Center



11880 COMMUNITY ROAD, SUITE 330, POWAY, CA 92064



The Building

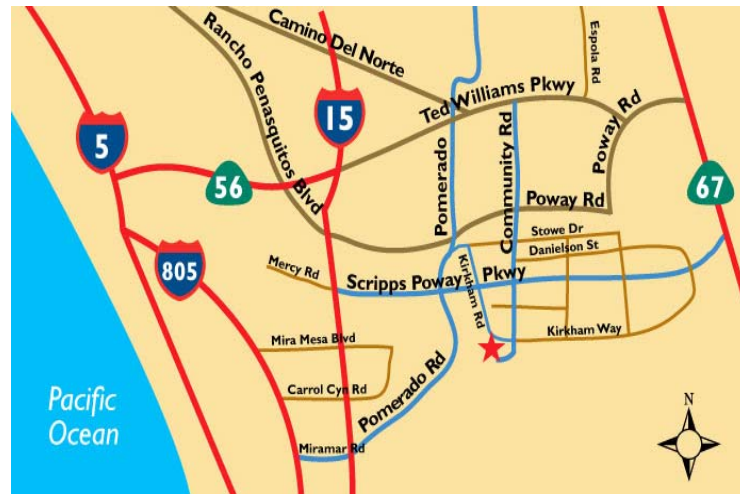
- > Approximately 3,115 SF
- > Includes approximately 559 SF of office improvements
- > One (1) 12' x 14' grade-level door
- > 22' clear height
- > 3/1,000 parking ratio
- > Abundant glass line
- > Gas service to the building
- > Part of a 145,685 SF industrial/warehouse project
- > No Mello-Roos bonds

The Property

- > Zoned IP - City of Poway
- > Concrete paving throughout
- > Part of a 145,685 SF industrial/warehouse project

Access

- > Located at the end of Community Road on a private cul-de-sac
- > Exceptional visibility to Community Road
- > Easy access to I-15 via Scripps Poway Parkway and Poway Road and to Highway 67 via Scripps Poway Parkway



LEASE RATE: NEGOTIALBLE

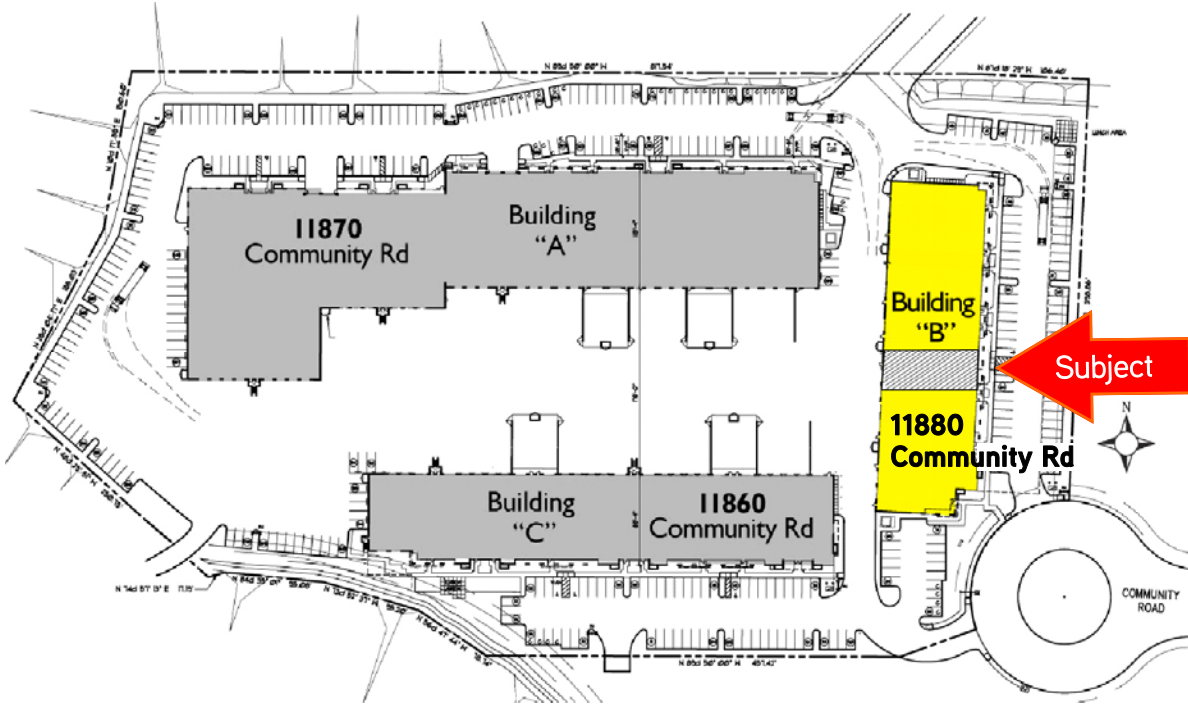
Operating expenses estimated at \$0.23/SF month

TED CUTHBERT
Senior Vice President
858 636 7988
CARLSBAD, CA
ted.cuthbert@colliers.com
Lic# 00964042

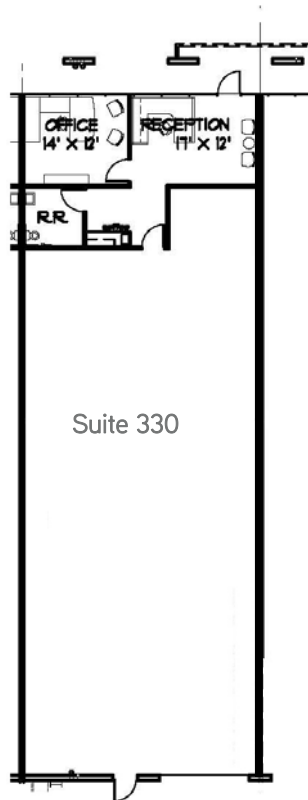
COLLIERS INTERNATIONAL
5901 Priestly Drive, Suite 100
Carlsbad, CA 92008
www.colliers.com/carlsbad

11880 Community Road, Suites 330 > Floor Plan

SITE PLAN



FLOOR PLAN



Contact Us

TED CUTHBERT
Senior Vice President
858 636 7988
CARLSBAD, CA
ted.cuthbert@colliers.com
Lic# 00964042

COLLIERS INTERNATIONAL
5901 Priestly Drive, Suite 100
Carlsbad, CA 92008
www.colliers.com/carlsbad

This document has been prepared by Colliers International for advertising and general information only. Colliers International makes no guarantees, representations or warranties of any kind, expressed or implied, regarding the information including, but not limited to, warranties of content, accuracy and reliability. Any interested party should undertake their own inquiries as to the accuracy of the information. Colliers International excludes unequivocally all inferred or implied terms, conditions and warranties arising out of this document and excludes all liability for loss and damages arising there from. Colliers International is a worldwide affiliation of independently owned and operated companies.

